

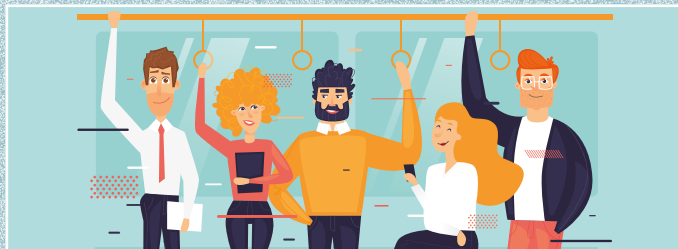
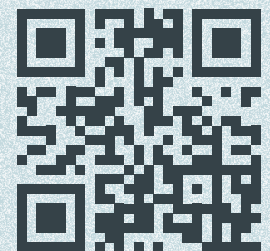
# ONLINE SEND CPD UNITS

**Short-hop learning journeys  
from the Universal SEND  
Services programme**



**Introducing 20 online SEND CPD units**  
exploring some of the most commonly  
observed barriers to learning in classrooms  
and other learning environments regardless  
of age, label or area of need.

**GET STARTED TODAY!**



Universal SEND Services is an ambitious programme, funded by the Department for Education, to develop the education workforce so that more children and young people have their needs identified and met effectively, resulting in successful learning in schools and further education settings, and leading to improved Preparation for Adulthood, including pathways to employment.



Developed in partnership with leading specialists from the sector to provide clear guidance on adaptations to help meet the needs of all learners



**FREE** to access



Each unit is classed as a 'short hop' learning journey and can be completed in under an hour



No need to complete individual units in a single session – progress can be saved



Badges and certificates are awarded for completion of multiple units



Provides information and skills required to build a holistic understanding of individual learners' characteristics



Provides clear guidance on adaptations to teaching, across the age range, to meet the needs of all learners

Funded by





# ONLINE SEND CPD UNITS

Short-hop learning journeys from the Universal SEND Services programme

GET STARTED TODAY!



**CREATING AN  
EMOTIONALLY SAFE  
ENVIRONMENT**

UNIT 1



**CREATING A  
SOCIALLY SAFE  
ENVIRONMENT**

UNIT 2



**CREATING A  
PHYSICALLY SAFE  
ENVIRONMENT**

UNIT 3



**AN INTRODUCTION  
TO SPEECH,  
LANGUAGE AND  
COMMUNICATION  
NEEDS**

UNIT 4



**IDENTIFYING AND  
SUPPORTING  
SPEECH,  
LANGUAGE AND  
COMMUNICATION  
NEEDS**

UNIT 5



**SUPPORTING  
DEVELOPMENT  
OF SPEECH,  
LANGUAGE AND  
COMMUNICATION  
SKILLS**

UNIT 6



**CREATING A  
COMMUNICATION  
SUPPORTIVE  
ENVIRONMENT**

UNIT 7



**UNDERSTANDING  
BEHAVIOUR AS  
COMMUNICATION**

UNIT 8



**PROMOTING  
MENTAL  
WELLBEING IN  
YOUR SETTING**

UNIT 9



**UNDERSTANDING  
AND PROMOTING  
RESILIENCE**

UNIT 10



**UNDERSTANDING  
ANXIETY AND  
CREATING A  
SUPPORTIVE  
LEARNING  
ENVIRONMENT**

UNIT 11



**SUPPORTING  
SENSORY  
DIFFERENCES IN  
THE LEARNING  
ENVIRONMENT**

UNIT 12



**AN INTRODUCTION  
TO TEACHING  
LEARNERS WITH  
PHYSICAL NEEDS**

UNIT 13



**UNDERSTANDING  
EXECUTIVE  
FUNCTION**

UNIT 14



**MEMORY FOR  
LEARNING**

UNIT 15



**UNDERSTANDING  
THE BUILDING  
'BLOCKS' FOR  
READING AND  
WRITING**

UNIT 16



**DEVELOPING SKILLS  
FOR MATHEMATICS**

UNIT 17



**PERSON CENTRED  
WORKING**

UNIT 18



**PROMOTING  
INDEPENDENCE**

UNIT 19



**TRANSITIONS**

UNIT 20



Our 'short hop' learning journeys offer an introduction to a range of themes for practitioners who can invest around an hour in CPD for SEND and inclusive practice. Anyone wishing to complete intermediate to advanced CPD should explore the wider Universal SEND Services programme - it'll open up a world of opportunities!

